

Estill County Farm Scoop

Agriculture & Natural Resources



University of Kentucky
College of Agriculture,
Food and Environment
Cooperative Extension Service



Cooperative Extension Service

Estill County
76 Golden Court
Irvine, KY 40336
(606) 723-4557
Fax: (606) 723-5912
Estill.EXT@uky.edu

Upcoming CAIP education component

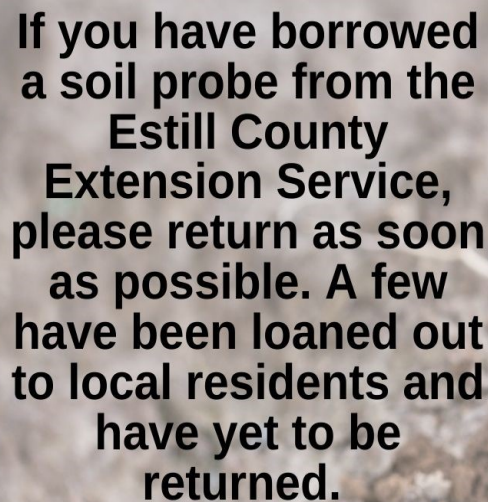
Estill County Extension will be offering a CAIP education component on Thursday, April 14th beginning at 5:30 p.m. prior to the Estill County Beef Producers Meeting. If you have any questions, please contact the Estill Extension Office at 606-723-4557.

Using a stock dog in your cattle operation

Josh Yarber, stock dog trainer, will be the guest speaker at the April 14th Beef Producers and Cattlemen Association meeting. Yarber will talk about the benefits of using a dog with your cattle. Josh has been training dogs for a number of years and has a passion for teaching the dog, and farmers, how beneficial this practice can be. The Beef Producers and Cattlemen's meeting will start at 6:30 p.m. at the Estill County Extension Office.

Vegetable Gardening for Beginners

There will be a Vegetable Gardening for Beginners class on Thursday, April 28 beginning at 6 p.m. See the flyer on page 4 of this newsletter for more information and how to sign up.



If you have borrowed a soil probe from the Estill County Extension Service, please return as soon as possible. A few have been loaned out to local residents and have yet to be returned.



April Classes

12:30 pm ET/11:30 a.m. CT

April 6

How to Grow: Squash

April 13

Tough Perennials for Sun

April 20

Gooseberries & Currants for Home Gardeners

April 27

Vertical Gardening with Vegetables



Register here:

<https://tinyurl.com/22APRHHW>

kentuckyhortnews.com

Judy Vaughn

County Extension Agent for
Family & Consumer Sciences
judy.vaughn@uky.edu

Taylor Miles

County Extension Agent for
4-H Youth Development
taylor_miles@uky.edu

Visit us online at estill.ca.uky.edu

Cooperative Extension Service
Agriculture and Natural Resources
Family and Consumer Sciences
4-H Youth Development
Community and Economic Development

Educational programs of Kentucky Cooperative Extension serve all people regardless of economic or social status and will not discriminate on the basis of race, color, ethnic origin, national origin, creed, religion, political belief, sex, sexual orientation, gender identity, gender expression, pregnancy, marital status, genetic information, age, veteran status, or physical or mental disability. University of Kentucky, Kentucky State University, U.S. Department of Agriculture, and Kentucky Counties, Cooperating.

LEXINGTON, KY 40546



Disabilities
accommodated
with prior notification.



Estill County Cattlemen's Association Eric Baker Scholarship

In loving memory of Eric Baker, the Estill County Cattlemen's Association has established a \$500 one-time scholarship opportunity for Estill County youth who are interested in post-secondary education, with an interest in agriculture. Eric Baker passed away September 20, 2021. Eric worked for the University of Kentucky for 27 years. Twenty-two of those years he served as the Cooperative Extension Agent for Agriculture and Natural Resources for Estill County. The last 22 years Eric was a prominent fixture for the agriculture community of Estill County. Eric leaves a lasting impact on the Estill County Cattlemen's Association and Beef Producers in Estill County.

Applicant Qualifications and Procedure:

1. Applicants must be a high school senior, high school graduate, or college student who is interested in pursuing post-secondary education related to agriculture. Applicants can attend universities, community colleges, technical colleges, or certification programs.
2. Application must be submitted by: **April 15, 2022**
3. Applicants can only receive the scholarship once.
4. Applicants must hold a 2.75 GPA; high school or college transcript must be submitted with application.
5. Applications must include two letters of recommendation turned in with application. Letters of recommendation must include their association with the applicant, candid evaluation of the applicant's abilities, background, character strengths, and weaknesses. Members of the Estill County Cattlemen's Association may not write letters of recommendation.
6. If selected, the recipient must submit verification of their enrollment in post-secondary education to the board before scholarship award check is issued. Failure to meet enrollment requirements will result in forfeiture of the scholarship.

For questions or to request an application, please contact:

kristen.kirkland@estill.kyschools.us

You can download this scholarship application at the link below:

https://estill.ca.uky.edu/files/estill_co_cattlemens_scholarship_application.pdf

Signs of Avian Influenza

Avian influenza is a virus that affects bird populations. There are many different strains of avian influenza that cause varying degrees of illness in birds. The most common types of avian influenza are routinely detected in wild birds and cause little concern. Highly Pathogenicity of “high path” Avian Influenza (HPAI) is often fatal in chickens and turkeys. HPAI spreads rapidly and has a high death rate in birds.

Identifying Infected Birds

Birds infected with the HPAI virus may show one or more of the following signs:

- Sudden death without clinical signs;
- Lack of energy and appetite;
- Decreased egg production or soft-shelled or misshapen eggs;
- Swelling of head, comb, eyelid, wattles, comb, and legs;
- Nasal discharge, coughing, and sneezing;
- Incoordination; or
- Diarrhea

Biosecurity Measures on the Farm Veterinarians should work with poultry producers to strengthen biosecurity practices. Recommended biosecurity measures include

- Establishing an “all-in, all-out” flock-management policy;
- Preventing exposure to wild birds or water or ground contaminated by wild birds;
- Closing bird areas to nonessential personnel or vehicles;
- Providing employees with clean clothing and disinfection facilities and all directions for their use;
- Thoroughly cleaning and disinfecting the equipment and

vehicles (including tires and undercarriage) when entering or leaving the farm;

- Avoiding the borrowing or lending of equipment or vehicles; and
- Limiting visits to other poultry farms, exhibitions, fairs, and sales or swap meets (if visits must occur, change footwear and clothing on their return);

Sick bird hotline

Sick or dead farm birds can be reported to USDA toll-free at 1-866-536-7593.

Keep up to date on Kentucky’s response by visiting: <https://www.kyagr.com/statevet/HPAI.html>
Information obtained from Kentucky Department of Agriculture Office of State Veterinarian Press Release



Highly Pathogenic Avian Influenza (HPAI) has been found in Kentucky. It is a contagious disease of birds, typically deadly to domesticated poultry.

WHAT KINDS OF BIRDS ARE AT RISK?

HPAI is highly contagious and often fatal for domesticated poultry, including **chickens, turkeys, pheasants, quail, ducks, geese, and guinea fowl**. It can be carried by free flying migratory waterfowl, such as ducks, geese, and shorebirds.

DOES HPAI INFECT PEOPLE?

According to the U.S. Centers for Disease Control and Prevention, these avian influenza detections do not present an immediate public health concern. Properly cooked meat and eggs from birds are safe to eat. Cooking poultry and eggs to an internal temperature of 165° F kills bacteria and viruses. Although no human cases of these avian influenza viruses have been detected in the United States, the CDC is continuing to monitor the situation. See their website, cdc.gov/flu/avianflu, for the latest.

HOW IS HPAI SPREAD?

The disease is spread by direct contact between birds, by coughing and sneezing, and through droppings. People can spread HPAI by moving infected birds, moving contaminated equipment and feed, and by wearing clothing and shoes that have been in infected areas.

WHAT DOES HPAI LOOK LIKE IN BIRDS?

Some signs of HPAI include sudden death of poultry without clinical signs, respiratory signs (nasal discharge, coughing/sneezing), a lack of energy or appetite, decreased water consumption, decreased egg production or soft-shelled or misshapen eggs.

WHAT YOU CAN DO TO HELP

- If you think your birds are sick please immediately call the **Sick Bird Hotline at: 866-536-7593**
- Keep your birds away from other birds.
- If you visit family or friends with birds, shower, wash your clothes, and change your shoes before handling your birds
- Don't visit them without taking these same steps if you have handled your birds.
- Try to keep people who also own birds from visiting your property
- Share information about HPAI with family and friends



KENTUCKY
DEPARTMENT OF
AGRICULTURE

kyagr.com/hpai

 SICK BIRD HOTLINE: 866-536-7593

VEGETABLE GARDENING

for beginners



University of Kentucky
College of Agriculture,
Food and Environment
Cooperative Extension Service



Thursday, April 28 at 6:00 p.m.

Estill Co. Extension Office, 76 Golden Court, Irvine

There are many great reasons to grow some of your own food. In this class we will teach the very basic concepts of growing vegetables, which is far easier than you might think. We will also cover specifics on a few of the basic crops for both cool and warm season vegetables

**This class is FREE but you must RSVP
Limited spaces available
Please call 606-723-4557 to RSVP**

Attendees will receive our vegetable gardening guide along with a variety of vegetable seeds.

Class will be led by Clark County Horticulture Agent, Carrie Spry

For more information, please contact
**Judy Vaughn, County Extension Agent for
Family & Consumer Sciences at 606-723-4557.**

Judy Vaughn
County Extension Agent
for Family & Consumer Sciences

Cooperative Extension Service
Agriculture and Natural Resources
Family and Consumer Sciences
4-H Youth Development
Community and Economic Development

Educational programs of Kentucky Cooperative Extension serve all people regardless of economic or social status and will not discriminate on the basis of race, color, ethnic origin, national origin, creed, religion, political belief, sex, sexual orientation, gender identity, gender expression, pregnancy, marital status, genetic information, age, veteran status, or physical or mental disability. University of Kentucky, Kentucky State University, U.S. Department of Agriculture, and Kentucky Counties, Cooperating.
LEXINGTON, KY 40546



Disabilities
accommodated
with prior notification.

Blueberry Production

Growing Blueberries in Kentucky

Want to grow blueberries for your home? Or, are you a commercial grower interested in adding blueberries to your production?

Join us as we share all about growing blueberries for local sales, U-pick, and home use.



April 7

**6:30pm /
5:30pm CDT**

This class will be offered via Zoom.

Use the link below to join:

<https://uky.zoom.us/j/85916024438>



Contact your local extension office with any questions.

Cooperative Extension Service
Agriculture and Natural Resources
Family and Consumer Sciences
4-H Youth Development
Community and Economic Development

Educational programs of Kentucky Cooperative Extension serve all people regardless of economic or social status and will not discriminate on the basis of race, color, ethnic origin, national origin, creed, religion, political belief, sex, sexual orientation, gender identity, gender expression, pregnancy, marital status, genetic information, age, veteran status, or physical or mental disability. University of Kentucky, Kentucky State University, U.S. Department of Agriculture, and Kentucky Counties, Cooperating.



BRAMBLE GROWERS WORKSHOP

APRIL 11th

**6:30 PM/
5:30 PM CDT**

This class will be offered via Zoom.

Use the link below to join:

<https://uky.zoom.us/j/87665400017>



University of Kentucky
College of Agriculture,
Food and Environment
Cooperative Extension Service

Want to raise fruit that money can't buy?

This workshop will help you get better production from your berries. Join us as we share all about growing brambles for local sales, U-pick, & home use.

Contact your local extension office with any questions.

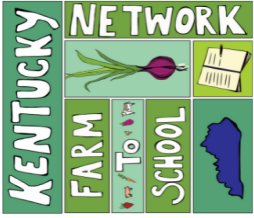
Featured Speaker:
Shawn Wright,
Extension Horticulture Specialist

Cooperative Extension Service
Agriculture and Natural Resources
Family and Consumer Sciences
4-H Youth Development
Community and Economic Development

Educational programs of Kentucky Cooperative Extension serve all people regardless of economic or social status and will not discriminate on the basis of race, color, ethnic origin, national origin, creed, religion, political belief, sex, sexual orientation, gender identity, gender expression, pregnancy, marital status, genetic information, age, veteran status, or physical or mental disability. University of Kentucky, Kentucky State University, U.S. Department of Agriculture, and Kentucky Counties, Cooperating.



LENINGTON, KY 40546



HEY KY FARMERS

Did you know most KY schools are receiving extra funding for their school meal program this year?

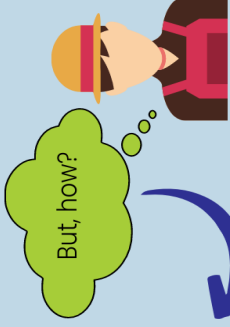
Through Supply Chain Assistance Funds from the USDA, KY Schools will be receiving an extra \$16 million NEXT MONTH!



\$\$\$

This could mean extra money in your pocket!

Supply Chain Assistance Funds MUST be spent on unprocessed or minimally processed domestic food products.



Eligible products include fluid milk, cheese, fruits and vegetables, and meats. This funding has to be spent on the school breakfast or lunch programs.



Talk to your local school's food service director and see what they might be interested in purchasing.



Questions? Contact the KY Farm to School Network at KYF25Network@gmail.com or (859) 428-7961.



You can find your local food service director's info on kyfarmtoschool.com or the school's website.

Estill County Beef Producers & Cattlemen's Meeting

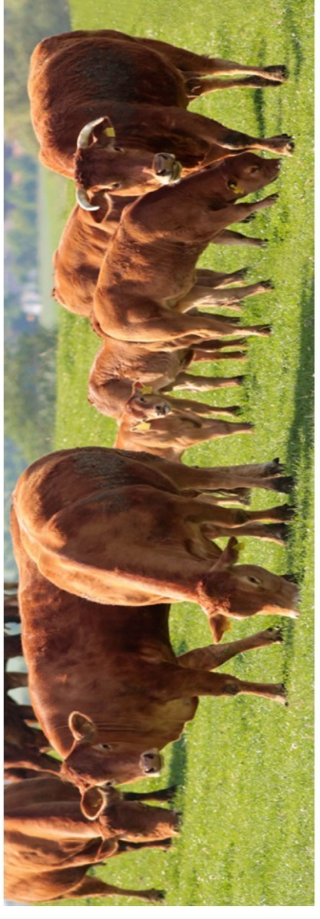
There will be a meeting of the Estill County Beef Producers and the Estill County Cattlemen's Association on **Thursday, April 14, 2022 at 6:30p.m.**

Meeting will be held at Estill County Extension Service 76 Golden Court, Irvine

Josh Yarber, Stock Dog trainer, will be the guest speaker during the Beef Producers and Cattlemen's meeting. Yarber will talk about the benefits of using a dog with your cattle. Josh has been training dogs for a number of years and has a passion for teaching the dog, and the farmers, how beneficial this practice can be for your cattle operation.



A CAIP Educational component is being offered prior to this meeting beginning at 5:30 p.m.



Estill County 4-H Council *Spring Fundraiser*

The Estill County 4-H Council will be taking orders for their annual Spring Flower Fundraiser. We will be selling hanging baskets and patio pots to raise money for local 4-H programs. Orders must be pre-ordered and pre-paid. Deadline for orders will be April 19, 2022. You will be contacted when your flowers are ready for pick-up.



ITEM

Hanging Baskets

Ferns

Combo Hanging Baskets

Patio Pots

Geraniums

PRICE

\$15.00

\$15.00

\$20.00

\$20.00

\$20.00

ORDER FORM LOCATED ON THE BACK OF THIS FLYER

*Images used for reference are from previous years.



ESTILL COUNTY 4-H COUNCIL 2022 SPRING FLOWER FUNDRAISER ORDER FORM

	Hanging Baskets & Ferns - \$15 Combo Hanging Baskets - \$20 Patio Pots & Geraniums - \$20	PLEASE NOTE: For the Petunia or Calibrachoa (Million Bells) hanging baskets, you will be picking color, not flower type.	
			ORDERS MUST BE PRE-PAID WE ACCEPT CHECK AND CASH ONLY NO CARDS
			Amount
	Name	Phone Number	Quantity
1			
2			
3			
4			
5			
6			
7			
8			

Orders must be pre-ordered and pre-paid by April 19th to the Estill County Extension Office – 723-4557.
Tentative arrival date will be first week of May.

We will call when flowers are ready for pick-up.
ORDERS MUST BE PRE-ORDERED & PRE-PAID
CHECK OR CASH ONLY! NO CARDS!
Mail to Estill County 4-H, 76 Golden Court, Irvine, KY 40336
Make checks payable to: Estill County 4-H Council



Eastern tent caterpillar egg hatch now underway for Central Kentucky

Eastern tent caterpillars have begun to hatch, with the first detections in Southern Kentucky last week. According to entomologists in the University of Kentucky College of Agriculture, Food and Environment, the caterpillars, which can cause foal losses, are expected in Central Kentucky by this or next week and Northern Kentucky a few days to a week after that.

After spending about nine months as eggs in masses on twigs of wild cherry and related trees, the first tiny eastern tent caterpillars of the season are now leaving their eggs said Jonathan Larson, UK extension entomologist. The egg hatch normally occurs at 50% bloom of forsythia, the interval between first and full bloom of the common spring-blooming plant. The larvae are among spring's first active insects and are well-equipped to cope with Kentucky's erratic temperature swings. Egg hatch occurs over several weeks in early spring. This increases the chance for survival in case of late freezes. The caterpillars grow and develop when the temperature is above 37 degrees F. Their preferred food plants are wild cherry, apple and crabapple, but they may appear on hawthorn, maple, cherry, peach, pear and plum as well.

When mature, the 2- to 2.5-inch long, hairy caterpillars have a habit of wandering from their host trees to seek protected areas to spin their cocoons, or to seek additional food if their natal tree becomes defoliated. At such times, they may crawl along fence lines and into pastures.

Consumption of large numbers of caterpillars by pregnant mares caused staggering foal losses in the Mare Reproductive Loss Syndrome outbreak of 1999-2001. MRLS can cause early- and late-term foal losses or weak foals. UK researchers conducted studies that revealed horses will inadvertently eat the caterpillars when present in pastures and feedstuffs. It is the caterpillar hairs, specifically the cuticles of those hairs, that embed into the lining of the horse's alimentary tract. Once that protective barrier is breached, normal alimentary tract bacteria may gain access to and reproduce in sites with reduced immunity, such as the fetus and placenta.

If practical, farm managers should move pregnant mares from areas where wild cherry trees are abundant to minimize the chance of caterpillar exposure. The threat is greatest when the mature caterpillars leave trees and wander to find places to pupate and transform to the moth stage.

Eastern tent caterpillars are also a nuisance to people living near heavily infested trees. The nests and defoliation are unsightly, and the caterpillars may wander hundreds of yards in search of protected sites to spin cocoons and pupate.

"Managing ETC in small ornamental trees, such as flowering crabapples, is easy," said Daniel Potter, UK entomology professor "Just wear a pair of grocery store plastic bags



like mittens, climb a stepladder, pull out the tents, turn the bags inside out to 'bag' the caterpillars and stomp them. Pruning out nests in ornamental trees sounds great, but in reality, by the time they are noticed, they're often in branch crotches where pruning will compromise the symmetry of the tree.

"Spraying the flowering fruit and decorative trees preferred by the caterpillars can be a bee hazard – and with some products, a label violation – because the trees are in bloom with bees visiting them at the same time eastern tent caterpillars are active," he said.

According to Potter, caterpillar management around horse farm paddocks comes down to keeping pregnant mares away from infested trees and either removing or not planting preferred host trees near paddocks. Additionally, controlling the caterpillars with insecticides may be warranted in some settings. That may require treating tall trees that are difficult to spray. For the latter scenario, professional arborists treat via trunk injection. Products labeled for eastern tent caterpillar control include Tree-äge and TreeMec (emamectin benzoate), Inject-A-Cide B (Bidrin), Abacide 2 (abamectin) and Lepitect (acephate). Applicators should read and follow all label instructions. All of the aforementioned injectable products are labeled for use on horse farms. For farms that are interested in prevention over the winter months, Larson recommended farms search for and destroy egg masses before they hatch.

"Egg masses can be seen over the winter, they look like sparkly, pyrite gum wrapped around twigs and branches," he said.

For more information about how to assess trees for egg masses, the UK Entomology publication, Checking Eastern Tent Caterpillar Egg Masses, is available at <https://entomology.ca.uky.edu/ef449>.

Contact:

Jonathan Larson, jonathan.larson@uky.edu; Holly Wiemers, holly.wiemers@uky.edu



University of Kentucky
 College of Agriculture,
 Food and Environment
 Cooperative Extension Service

NONPROFIT ORG
 US POSTAGE PAID
 IRVINE, KY
 PERMIT #6

Estill County
 76 Golden Court
 Irvine, KY 40336

RETURN SERVICE REQUESTED

Cucumber, Corn, and Bean Salsa

- ½ cup fresh whole kernel corn, cooked
- 1 ounce package dry ranch dressing mix
- ⅛ cup cider vinegar
- 2 tablespoons sugar, optional

- 2-3 large cucumbers
- 2 tomatoes
- 1 yellow bell pepper
- 1 small red onion
- ¼ cup chopped fresh cilantro
- ½ cup black beans

dressing packet, vinegar, and sugar. Pour dressing over vegetables and mix well. **Serve** immediately or refrigerate until chilled.

Yield: Makes 20, ½ cup servings.

Nutrition Analysis: 50 calories, 0 g fat, 130 mg sodium, 7 g carbohydrates, 2 g fiber, 70% Daily Value of vitamin C and 6% Daily Value of vitamin A



Buying Kentucky Proud is easy. Look for the label at your grocery store, farmers' market, or roadside stand.

In a small bowl, mix together ranch

vegetables.

Drain off liquid prior to adding to

chopped vegetables. **Add** corn. If

Drain and rinse beans and add to

mixing bowl with chopped cilantro.

and onion. **Combine** in a large

cucumbers, tomatoes, pepper,

Wash all vegetables. **Finely chop**

